

Press event: 21 September 2022, 3:30 pm

Presenting the new wing of the Josef Albers Museum Quadrat Bottrop

Your guides:

- Bernd Tischler, Mayor, City of Bottrop
- Dr. Heinz Liesbrock, Director, Josef Albers Museum Quadrat Bottrop
- Annette Gigon, Gigon/Guyer Architects

Press folder contents:

1. Press release
2. History of the museum complex
3. Design competition for the new wing
4. Design in brief G/G
5. Credits G/G
6. Facts and figures G/G
7. Company portrait G/G
8. Company portrait pbr
9. Index G/G
10. Press photo overview
11. Press contacts

Presenting the new wing of the Josef Albers Museum Quadrat Bottrop

PRESS RELEASE

Bottrop/Westphalia, 21 September 2022

A win for art, the city and the state: Now finished, the new wing of the Josef Albers Museum Quadrat Bottrop opens new horizons.

Official public opening on 19 October 2022 with the special international exhibition “Josef Albers: Homage to the Square”.

Dr. Heinz Liesbrock, director of the Josef Albers Museum Quadrat, architect **Annette Gigon**, and the senior mayor of the city of Bottrop **Bernd Tischler** are presenting the new building today. This extension to the Josef Albers Museum was designed by the acclaimed Zurich-based Gigon/Guyer architects. Their proposal came out ahead of 24 other candidates in a Europe-wide non-open competition. The Gigon/Guyer architectural office created the building in collaboration with pbr Rohling based in Osnabrück.

The new space will enable the museum in Bottrop, which opened in 1976, to present special exhibitions alongside its worldwide unique collection of works by Josef Albers. Annette Gigon and Mike Guyer’s conception of a two-storey wing represents a harmonious extension to the complex in Bottrop’s historical Stadtgarten park. The new structure extends this ensemble consisting of the 1913 Amtsrichtervilla and Bernhard Küppers’ museum buildings from the 1970s and 80s to the northeast, providing an area of 1,400 square metres on two floors. Its eight exhibition rooms are discreet in design in order to give precedence and space to the art itself.

Visitors to the museum enter the new wing via a connecting bridge from the permanent collection, with views onto the park. The path through the eight differently sized exhibition rooms is partly meandering and partly straight. Four large windows, one on each side, look out onto the park while also granting passers-by a look into the museum. Consistent natural lighting is provided primarily by the sawtooth rooflights. The proportions of the rooms, doors and windows are chosen to foster perception of the art.

In addition to space for special exhibitions, the new wing has rooms for education and outreach, an art depot and offices.

Annette Gigon / Mike Guyer Architects

Annette Gigon and Mike Guyer earned degrees from the ETH Zurich in architecture and co-founded the Gigon/Guyer architectural office in Zurich in 1989. They soon gained recognition for museum projects with the Kirchner Museum Davos, the extension to the Kunst Museum Winterthur, the Kunstmuseum Appenzell and the museum and park in Kalkriese in Germany. Gigon/Guyer Architects

have received awards for work both in Switzerland and abroad, including the Fritz Schumacher Prize in Germany, the RIBA Fellowship in Great Britain, and the Tageslicht Award (known as the Daylight Award since 2014), one of the highest endowed prizes in Switzerland.

Opening on 19 October 2022

The Josef Albers Museum Quadrat Bottrop will open its new wing on 19 October 2022 in conjunction with an exhibition entitled “Josef Albers: Homage to the Square” (to run until 26 February 2023). Including numerous top-level loans from museums in other countries, the exhibition will honour Josef Albers, who was born in Bottrop in 1888, as one of the most important artists of the 20th century.

The exhibition focusses on the extraordinary series that Albers (b. 1888 in Bottrop – d. 1976 in New Haven, Connecticut) worked on from 1950 until his death. Around 100 outstanding examples will be shown in eight chapters. They include loans from the Museum of Modern Art, the Metropolitan Museum of Art and the Whitney Museum in New York. They are complemented by notable works by Paul Cézanne (*Quarry at Bibémus* from Museum Folkwang), Giorgio Morandi, Ad Reinhardt and Donald Judd – artists whose work is closely connected with that of Josef Albers.

The new permanent exhibition

The new permanent exhibition of works by Josef Albers, which is housed in the 1983 part of the museum, will also open on 22 October and can therefore be viewed for the first time alongside a special exhibition. It features Albers’ work at the Bauhaus, his encounters with pre-Columbian art in Mexico, and the famous course on colour he developed as a teacher in the USA.

Important date: The **press conference for the opening will be held on 13 October at 12 noon.** An invitation will follow.

Funding for the new wing has come from the German federal government, state of North Rhine-Westphalia, RAG Foundation, RAG corporation, Evonik Foundation, Alfried Krupp von Bohlen und Halbach Foundation, Brost Foundation, Landschaftsverband Westfalen-Lippe and Josef and Anni Albers Foundation.

Press information

Architectural history: The Josef Albers Museum Quadrat in Bottrop **From a judge's villa to the competition for the new extension**

The "Quadrat" museum centre embedded in the landscape of Bottrop's Stadtgarten park is a complex of two museums with extensive exhibition space. Development of the centre began in 1961 when the first museum was founded in the "Amtsrichtervilla", a residence built in 1913 for the head of the district court. Back then no one imagined that a museum ensemble of international renown would arise at this site in the city of Bottrop.

Development stages:

1. The Heimatmuseum (1961)

In **1961** the former residence of the first director of the Bottrop district court was repurposed as a **municipal museum of local history, directed by Arno Heinrich**. Thanks to extensive excavation work, within its first decade the Bottrop Heimatmuseum compiled one of the **most important prehistoric and Ice Age natural history collections** in the Federal Republic of Germany.

2. Quadrat museum centre (1976)

Bernhard Küppers, head architect for the city of Bottrop, was commissioned in the **1970s** to build a museum to house the rapidly growing **Ice Age collection** and provide **exhibition space for art**. The determining factor was a gift by the **painter and colour theorist Josef Albers**, who was born in Bottrop in 1888 and given honorary citizenship of the city in 1970. In connection with the latter he donated six paintings and numerous graphics to the city of Bottrop, prompting municipal authorities to begin planning an extension to the local history museum (Heimatmuseum) in the Stadtgarten park.

On **4 September 1976** the **Quadrat museum centre with its Modern Gallery and Ice Age hall** opened as an extension to the museum for local and prehistory at the edge of the Stadtgarten park. It was funded by an economic stimulus programme from the state of North Rhine-Westphalia with a focus on educational facilities.

The concept for the Quadrat museum centre of 1976: Architect Bernhard Küppers was commissioned to “house three different facilities, namely the Modern Gallery, the media centre and the museum for local and prehistory, in different buildings that are separate from each other yet connected in a pavilion architectural style”.¹

Küppers added a modern museum building to the Heimatmuseum in the residential villa, connected via a passage with high windows on both sides. The new museum space consisted in large part of three square modules. The Modern Gallery and Ice Age hall are aligned diagonally and connected by a multifunctional reception hall with a cashier’s desk and forum. This hall is accessed by a grand staircase below a prominently projecting roof. Entire window fronts face the park, and the passages from the centre to the side modules are also generously dimensioned.

Another gift followed in 1980: Anni Albers, a textile artist and the wife of Josef Albers, and the Albers Foundation donated more than 300 works from the estate of Josef Albers, who had died in 1976, to the museum. The decision was made to add a new wing.

3. Josef Albers Museum (1983)

Construction of an extension to house the gift from Josef Albers was again entrusted to the Bottrop architect **Bernhard Küppers**. It was opened in **1983 as the “Josef Albers Museum”**.

The design of this extension differed markedly from the existing edifice. “A transparent bridge resting on a pair of pillars makes the intended separation clearly visible. The Albers museum is thereby connected by the bridge with the “Quadrat” museum complex yet also located at a distance from it.”²

The building has exterior dimensions of approximately 28 x 28 metres. An embedded central hall has a surface area of 14 x 14 metres under a sawtooth roof. Küppers designed it expressly to **display the larger *Homage to the Square* paintings**. Two large passages connect this central square with the surrounding areas that literally engulf it. Partitions are utilised to form enclosed areas and enable works of art to be displayed in groups.

¹ *Josef Albers Museum Bottrop* (with texts by U. Schumacher, B. Küppers, W. Spies, J. Wißmann, E. Gomringer), published by the city of Bottrop, 1983, p. 11 (Küppers).

² *Josef Albers Museum Bottrop* (with texts by U. Schumacher, B. Küppers, W. Spies, J. Wißmann, E. Gomringer), published by the city of Bottrop, 1983, p. 11 (Küppers).

The materials used are the same as those for the Modern Gallery, namely steel, glass and concrete, and Küppers also evoked **elements of Bauhaus architecture**. Clear reference was made to Mies van der Rohe's "Neue Nationalgalerie" in Berlin, even though the Bottrop ensemble is of course on a considerably smaller scale.

Küppers on the room design: "The rooms should be designed such that they can be apprehended with ease and defined by their delineating surfaces. All the delineating elements (floors, walls, ceilings) should appear as natural as possible in order to give precedence to the objects exhibited or in other words not to distract the visitors."³

Bottrop therefore received – even if belatedly – a museum of international stature. Functional and focused on the essentials, its design resonates with the art of Josef Albers. Küppers expressly intended to create spaces "with a sufficiently meditative atmosphere to reflect the contemplative art of Josef Albers while not thereby losing touch with the world at large."⁴ Transparency vis-à-vis the park-like surroundings, also designed by Küppers, plays an especially important role in visitors' initial and defining impression of the museum, which has remained the case to this day.

The **lower level** continues to house a cafeteria, offices, library and storage space as well as a room for the building's technical services. A seminar room designed to meet the needs of an educational facility is used by the municipal community college (Volkshochschule), school classes and other visitor groups.

It looks out onto the park-like surroundings and the sculpture garden.

In 2006 the museum building and surroundings were granted protected landmark status.

4. Competition for the current extension (2022): Rationale and requirements

Forty years after it opened, the Quadrat Museum was no longer up to date and did not offer the potential for further development. The current extension will enable large-scale special exhibitions to be shown in parallel to the Josef Albers permanent collection. International works in constructivism and colour painting – acquired by the city of Bottrop since the museum was founded – can now finally be shown on an uninterrupted basis.

³ Schumacher, Ulrich, Bernhard Küppers, *Architektur, Kunst, Natur. Das Museum in Bottrop*, published by the Josef Albers Foundation Bottrop, 1988, no page number.

⁴ *Josef Albers Museum Bottrop* (with texts by U. Schumacher, B. Küppers, W. Spies, J. Wißmann, E. Gomringer), published by the city of Bottrop, 1983, p. 12 (Küppers).

The rationale in detail:

The **donation agreement** signed by the city of Bottrop and Anni Albers with the **Josef Albers Foundation** in 1980 stipulates **permanent presentation** of the Albers collection in the part of the building opened for that purpose in 1983.

However, the collection has had to yield temporarily to numerous special exhibitions for space reasons. That part of the agreement could be suspended for limited periods of time, but regular sequestering of the collection must not become a permanent state of affairs. The Albers Foundation has since made clear that it will not accept regular removal of works on an enduring basis.

Over **the previous decade** the museum has held significant **special exhibitions** featuring major loans from museums abroad (works by e.g. Agnes Martin, Donald Judd, Robert Adams and Walker Evans). These could only be shown in the **Josef Albers Museum wing** because it is the only place with a modern **air-conditioning system**. During these exhibitions the permanent Albers collection could therefore only be displayed in considerably reduced form in the **Modern Gallery**.

In addition to the lack of air conditioning, which could not be retrofitted in an economically feasible way, other shortcomings also stood in the way of modern museum operations. The Modern Gallery had insufficient wall space for the core purpose of a museum, namely the display of works of art. Consistent lighting was only possible with artificial sources, and natural light entering through large glass surfaces had an unfavourable effect on the displays.

Delicate paintings, drawings and photographs could not be exhibited. Today's museum standards demand stable temperatures, humidity and the ability to dim light to 50 lux.

Requirements for the extension

The new wing for special exhibitions should be appended to the 1983 building that houses the Josef Albers Museum. Visitors should proceed through the Albers collection on their way to the temporary exhibitions.

In addition to a progression of around eight exhibition rooms of different sizes, the new building should contain additional space for an educational centre, an art depot and a delivery area where the museum can receive works of art under safe and secure conditions.

Press information

Extension to the Josef Albers Museum Quadrat Bottrop: Design competition

The call for proposals

In 2016 the city of Bottrop decided to hold a competition for suitable architectural offices to design an extension to the Quadrat Museum. The announcement was made Europe-wide, with 25 offices invited to submit proposals to the non-open contest.

The office of Norbert Post and Hartmut Welters, architects and urban planners from Dortmund, was commissioned to conduct and oversee the competition. The associated costs of approximately 170,000 euros were covered by a grant from the state of North Rhine-Westphalia.

25 architectural offices submitted designs for the extension:

- Prof. Hans Kollhoff Generalplanungs GmbH, Berlin
- Bruno Fioretti Marquez Architekten, Berlin
- Bolles + Wilson GmbH & Co. KG, Münster
- Annette Gigon/Mike Guyer Architekten, Zurich
- Christ & Gantenbein, Basel
- Manuel Herz Architects, Basel
- Dipl.-Ing. Heinrich Böll Architekt BDA DWB, Essen
- Toshiko Mori Architect, New York
- Assmann Beraten + Planen, Dortmund with
Ellertmann, Piehl, Schmitz Architekten PartG mbB, Münster
- Nattler Architekten, Essen
- Felix Claus Dick van Wageningen Architecten, Amsterdam
- Bolwin Wulf Architekten, Berlin
- dürschinger architekten, Fürth
- Stöbe Architekten GmbH & Co. KG, Meerbusch
- Muffler Architekten, Tuttlingen

- Leismann AG, Biel
- Feja Kemper Architekten, Recklinghausen
- Klein + Neubürger Architekten Partnerschaft mbB, Bochum
- dauner rommel schalk architekten, Stuttgart
- schneider + schumacher Planungsgesellschaft mbH, Frankfurt am Main
- SSP AG, Bochum
- kleyer.koblitz.letzel.freivogel gesellschaft von architekten mbh, Berlin
- Fritzen + Müller-Giebeler Architekten GmbH & Co, KG, Münster
- BEHLES & JOCHIMSEN Gesellschaft von Architekten mbH, Berlin
- ARCHITEKTURBUERO 1 ZT GmbH, Linz

The **independent jury** was composed of 24 members, including architects and representatives of the city of Bottrop, the Quadrat Museum, the Josef and Anni Albers Foundation, the LWL museum office for Westphalia and the LWL office for historical preservation, landscape and building culture in Westphalia.

The following **jury members had voting rights**:

Architecture:

- Professor Astrid Stauer, Stauer & Hasler Architekten AG/BSA SIA, Switzerland
- Christoph Sattler, Hilmer Sattler Architekten Ahlers Albrecht, Munich
- Christoph Felger, partner, David Chipperfield Architects – Gesellschaft von Architekten mbH, Berlin
- Building assessor Klaus Müller (Dipl.-Ing.), urban planner, technical alderman for the city of Bottrop

City and art:

- Klaus Strehl, mayor, chairperson of the urban planning and environmental protection committee
- Monika Budke, mayor, chairperson of the cultural affairs committee
- Dr. Heinz Liesbrock, director, Josef Albers Museum Quadrat

Chaired by Christoph Sattler of Hilmer Sattler Architekten Ahlers Albrecht, Munich, the jury discussed the submissions and selected the winners:

1st prize € 30,000

Annette Gigon/Mike Guyer, Zurich (architecture / building planning),
pbr Planungsbüro Rohling AG Architekten Ingenieure, Osnabrück (general planning, building
technical services, structural engineering)

2nd prize € 22,000

Bruno Fioretti Marquez Architekten, Berlin (architecture / building planning, general
planning), Ingenieurgesellschaft Zimmermann mbH (technical building services), ifb frohloff
staffa kühl ecker (structural engineering), Capatti Strauch Landschaftsarchitekten (landscape
architecture)

Honourable mention € 10,000: SSP AG, Bochum

Honourable mention € 10,000: Leismann AG Architektur Stadtplanung, Biel

Honourable mention € 5,000: dauner rommel schalk architekten, Stuttgart

Following negotiations with the two winners and submission of tenders, the final winner of
the competition was the team of Gigon & Guyer / pbr.

ARGE Josef Albers Museum Quadrat
GIGON/GUYER / pbr

**Extension Josef Albers Museum Quadrat, Bottrop
“Josef-Albers-Galerie”**

A two-story wing has been added to the “Josef Albers Museum Quadrat”, situated in Bottrop’s historical park Stadtgarten. It accommodates temporary exhibitions and additional space for museum education, art storage and the workshop.

The new structure is situated to the northeast of the judge’s villa from 1913 and the museum buildings by Bernhard Küppers from the 1970s and ‘80s, which form the existing ensemble. The shape, materials and colours of the extension were chosen so that the different construction periods and their respective architectures remain legible but nonetheless form a new harmonic whole. The added volume has a rectangular footprint like the historical villa and is offset from the adjacent wing in such a way as to preserve the trees and the views to the north-east from the existing rooms. The pond, which was created after the last construction phase in the 1980s, has been moved a few metres closer to the access road, thus enhancing its presence.

Contrasting with Küppers’s steel and glass pavilions, the new extension appears as a compact structure with only a few deliberately placed openings, while its materials and colours refer to the older buildings. A cladding of powder-coated metal panels envelops the volume and forms a brim around the sawtooth rooflights. Along the outermost rooflight, the cladding tilts forward and generates a light funnel. In a similar fashion, the north-western facade partly unfolds to create a protected outdoor delivery area.

The ground floor on the Stadtgarten level contains the workshop, the art depot, an office and the library as well as the two educational rooms. The latter are accessed via the exhibition level and are oriented towards the pond.

Museum visitors enter the new tract via a connecting bridge from which a window affords a view of the park. The trapezoidal plan of the bridge makes it seem longer upon arrival and shorter on the way back.

The path through the eight exhibition rooms of varying dimensions is partly meandering and partly straight. Four large windows, one on each side of the building, enable visitors to enjoy vistas of the park, and passers-by to look into the museum. The works of art are largely illuminated from above by the sawtooth rooflights. The spatial proportions, the door and window openings, as well as the surface materials are selected to foster the perception of the art. Art takes priority: it has not simply been given more room in the extension; it has also been given “breathing space”.

GIGON / GUYER

**ANNETTE GIGON / MIKE GUYER DIPL.ARCHITEKTEN ETH/BSA/SIA AG TEL +41 (0) 44 257 11 11
CARMENSTRASSE 28 CH-8032 ZÜRICH E-MAIL INFO@GIGON-GUYER.CH FAX +41 (0) 44 257 11 10**

**ARGE Josef Albers Museum Quadrat
GIGON/GUYER / pbr**

CREDITS

**Extension Josef Albers Museum Quadrat, Bottrop
«Josef-Albers-Galerie»**

Project: Extension Josef Albers Museum Quadrat, Bottrop
«Josef-Albers-Galerie»

Address: Im Stadtgarten 20, 46236 Bottrop, Germany

Competition: October 2016 – March 2017, 1st Prize

Planning/ Construction: Aug. 2017 – Sept. 2022

Client: City of Bottrop, Department of Real Estate Management

Occupant: Josef Albers Museum . Quadrat Bottrop

Funding bodies: Federal Republic of Germany, represented by:
The Federal Government Commissioner for Culture and the Media

State of North Rhine-Westphalia, represented by:
Ministry of Culture and Science of the State of North Rhine-Westphalia

RAG

RAG Foundation

Evonik Foundation

Brost Foundation

Alfried Krupp von Bohlen und Halbach Foundation

LWL Landschaftsverband Westfalen-Lippe

The Josef & Anni Albers Foundation

Technical advice and participation: Federal Ministry of the Interior, Building and Community

Competition:

Architecture: Annette Gigon / Mike Guyer Architects, Zurich
Collaborators:
Stefan Thommen, Sarah Haubner, Daniel Hurschler

Planning/Costs: pbr Planungsbüro Rohling AG, Osnabrück

Planning/ Construction:	ARGE Josef Albers Museum Quadrat Joint venture of Gigon/Guyer Architects and pbr Planungsbüro Rohling AG
Architecture:	Annette Gigon / Mike Guyer Architects, Zurich Collaborators: Pieter Rabijns (Team Manager), Philippe Volpe
Construction Management:	pbr Planungsbüro Rohling AG, Osnabrück
Structural Engineer:	pbr Planungsbüro Rohling AG, Frankfurt am Main
Building Services Engineer:	pbr Planungsbüro Rohling AG, Osnabrück
Daylighting Consultant:	Institut für Tageslichttechnik Stuttgart, Stuttgart
Building Physics / Acoustical Engineer:	a°blue GmbH, Hamburg
Landscape Architecture:	Büro Drecker, Bottrop
Project Management:	Kempen Krause Ingenieure GmbH, Cologne office
Fire Safety:	Das Ingenieurhaus Borgert Keller Witte, Bornheim
Geotechnical Engineer:	Dr. Torsten Böcke, Dinslaken
Safety and Health Coordination:	Zeppelin Rental GmbH, Essen
Film:	Severin Kuhn, Zurich
Photography:	Stefan Müller, Berlin

ARGE Josef Albers Museum Quadrat
GIGON/GUYER / pbr

FACTS & FIGURES

Extension Josef Albers Museum Quadrat, Bottrop «Josef-Albers-Galerie»

Project:	Extension Josef Albers Museum Quadrat, Bottrop «Josef-Albers-Galerie»
Address:	Im Stadtgarten 20, 46236 Bottrop, Deutschland
Competition:	October 2016 – March 2017, 1st Prize
Planning/Construction:	Aug. 2017 – Sept. 2022
Usage:	8 exhibition rooms for temporary exhibitions, Park level: Museum education, art depot, workshop, material storage, specialist library, office, building services, deliveries
Building:	2-storey extension Sawtooth roof Connecting bridge to the heritage-listed building Historic, heritage-listed park Height: 10.95 m Length: 33.60 m Width: 26.50 m 8 exhibition rooms: Sizes from 58 m2 to 112 m2 Exhibition room height: 4.70 m to 6.80 m Connecting bridge: Length: 9.50 m Tapered form 3.65 m to 2.75 m
Area/ Volume (DIN 277-1):	
Built-up area:	951 m2
Gross floor area:	1 996 m2
Net floor area:	1 557 m2
Useful area:	1 187 m2
Gross volume:	9 415 m3
Materialisation:	
Facade	Curtain-type, rear-ventilated façade Large-format metal panels, concealed mounting, powder-coating in black-brown matt pearlescent mica colour
Skylights	Triple insulating glazing, with white glass and – to diffuse daylight – glass etched on one side
Interior walls	Aerated concrete block, or drywall shell, plastered, painted white

GIGON / GUYER

Floors exhibition	Solid wood flooring, European oak, light oiled
Floors secondary rooms	Art education / office / circulation: Oak parquet flooring, dark smoked, oiled Delivery / workshop / art depot / circulation: Hard concrete, varnish-impregnated
Artificial lighting	Indirect artificial lighting strip with LED + reflector, dimmable, integrated in the sawtooth roof on the interior side

GIGON / GUYER

**ANNETTE GIGON / MIKE GUYER DIPL.ARCHITEKTEN ETH/BSA/SIA AG TEL +41 (0) 44 257 11 11
CARMENSTRASSE 28 CH-8032 ZÜRICH E-MAIL INFO@GIGON-GUYER.CH FAX +41 (0) 44 257 11 10**

Annette Gigon / Mike Guyer Architekten

Beide Büropartner diplomierten an der ETH Zürich in Architektur und führen seit 1989 gemeinsam das Büro Gigon/Guyer Architekten in Zürich. Mit Museumsbauten wie dem Kirchner Museum Davos, der Erweiterung des Kunstmuseums Winterthur, dem Kunstmuseum Appenzell oder dem Archäologischen Museum in Kalkriese, Deutschland haben die Architekten früh Bekanntheit erlangt.

Neben weiteren Museumsbauten haben sie ihr Tätigkeitsgebiet um Wohn- und Bürogebäude erweitert, so dem Bürohochhaus Prime Tower in Zürich, dem Würth Haus Rorschach und dem Neu- und Umbau des Löwenbräu-Areals zum Kulturzentrum mit Wohnen und Büros. Seit 2012 sind Annette Gigon und Mike Guyer ordentliche Professoren an der ETH Zürich.

Für ihre Arbeit erhielten Gigon/Guyer Anerkennung innerhalb und ausserhalb der Landesgrenzen, so mit dem Fritz Schumacher Preis in Deutschland, der RIBA-Fellowship in Großbritannien und dem Tageslicht-Award, einem der höchstdotierten Architekturpreise der Schweiz.

Annette Gigon / Mike Guyer Architects

Both partners graduated from the ETH Zurich and established their office together in 1989. With museum projects such as the Kirchner Museum in Davos, the extension of the Kunstmuseum Winterthur, the Kunstmuseum Appenzell and the archaeological museum and park in Kalkriese, Germany, they attracted international attention early on.

In addition to other museum buildings, Gigon/Guyer have in recent years extended their devotion to residential architecture and office buildings, such as the office high-rise Prime Tower in Zurich, the Würth Haus Rorschach and the remodeling of the former Löwenbräu brewery in Zurich into a cultural centre with housing and offices. Since 2012 Annette Gigon and Mike Guyer are Professors of Architecture and Technology at the Swiss Federal Institute of Technology in Zurich.

For their work Gigon/Guyer have received accolades within the country and abroad, including the Fritz Schumacher Prize in Germany, the RIBA Fellowship in Great Britain, and the Daylight Award, one of the most prestigious architecture prizes in Switzerland.

Gigon/Guyer Architekten, Zürich

Pressemappe, 21.09.2022
Erweiterung Josef Albers Museum Quadrat, Bottrop
«Josef-Albers-Galerie»

Pressekontakt:
+41 44 257 11 41
k.mencke@gigon-guyer.ch



pbr Architects Engineers

Albert-Einstein-Straße 2 | 49076 Osnabrück | communications contact Frauke Stroman | 0541 9412 201 | stroman.frauke@pbr.de

pbr Planungsbüro Rohling AG is a family-run, full-service design office founded in 1960. With 500 architects, electrical, utility and construction engineers, and specialists in building information modelling and sustainability, it plans, manages and conducts complex projects in the public and private sectors throughout Germany. With twelve offices in the country, it handles all architectural and engineering services in the German HOAI system from initial ideas and drafting to property monitoring.

Joining GIGON / GUYER Architects on the planning and construction team for the extension to the Josef Albers Museum in Bottrop, pbr was responsible for the following services: architecture stages (LPH) 5 to 9, structural engineering stages (LPH) 1 to 6, and technical building service stages (LPH) 1 to 9.



LEGENDE

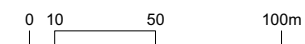
- 1 Alte Villa
- 2 Museum - 1. Etappe
- 3 Museum - 2. Etappe
- 4 Erweiterung
- 5 Stadtgarten
- 6 Teich

0341 Erweiterung Josef Albers Museum Quadrat, Bottrop, 2016 - 2022

0341 Extension Josef Albers Museum Quadrat, Bottrop, 2016 - 2022

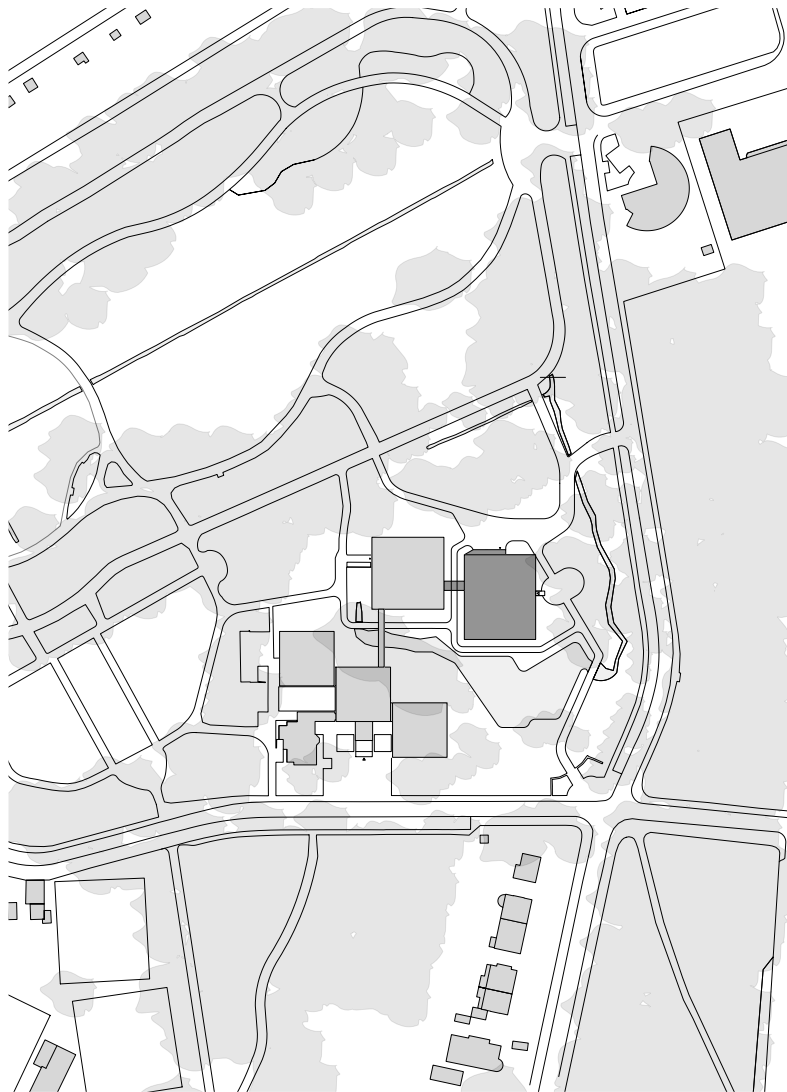
Situation

Situation



ARGE Josef Albers Museum Quadrat GIGON/GUYER / pbr

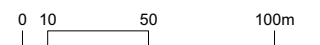
© GIGON / GUYER



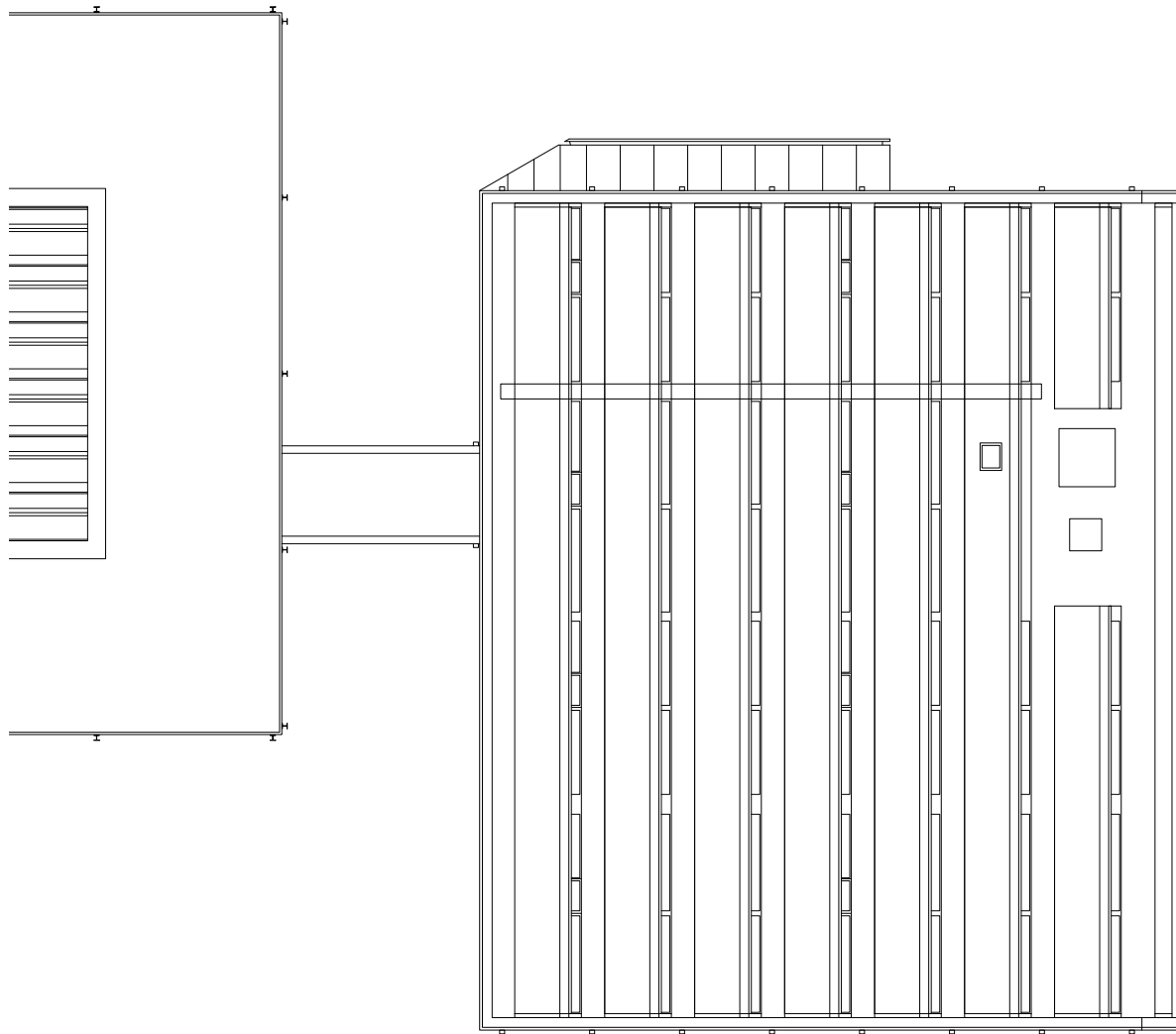
0341 Erweiterung Josef Albers Museum Quadrat, Bottrop, 2016 - 2022
0341 Extension Josef Albers Museum Quadrat, Bottrop, 2016 - 2022

ARGE Josef Albers Museum Quadrat GIGON/GUYER / pbr

Situation
Situation



© GIGON / GUYER



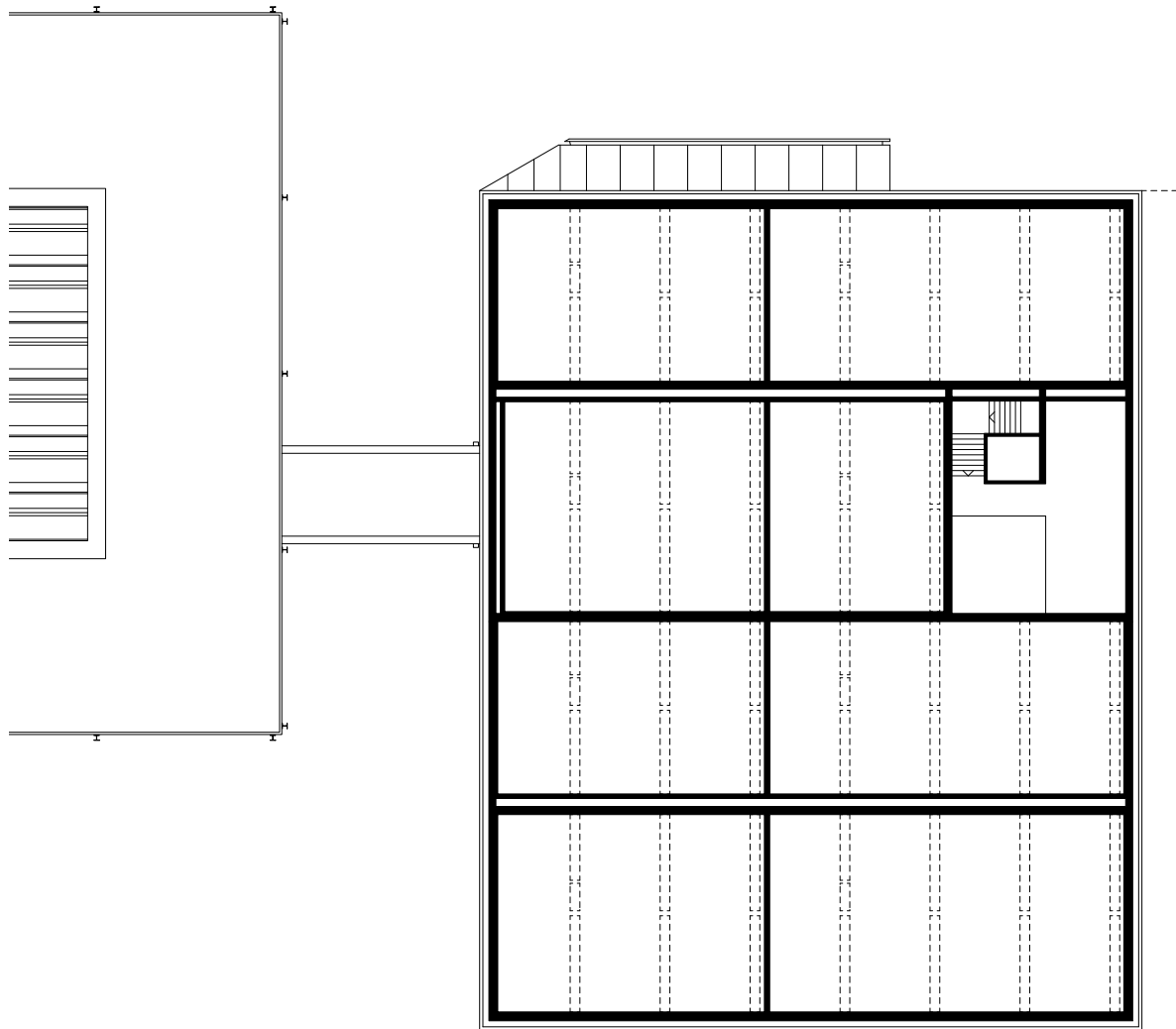
0341 Erweiterung Josef Albers Museum Quadrat, Bottrop, 2016 - 2022
0341 Extension Josef Albers Museum Quadrat, Bottrop, 2016 - 2022

ARGE Josef Albers Museum Quadrat GIGON/GUYER / pbr

Grundriss Dachaufsicht
Top view of the roof



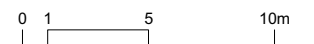
© GIGON / GUYER



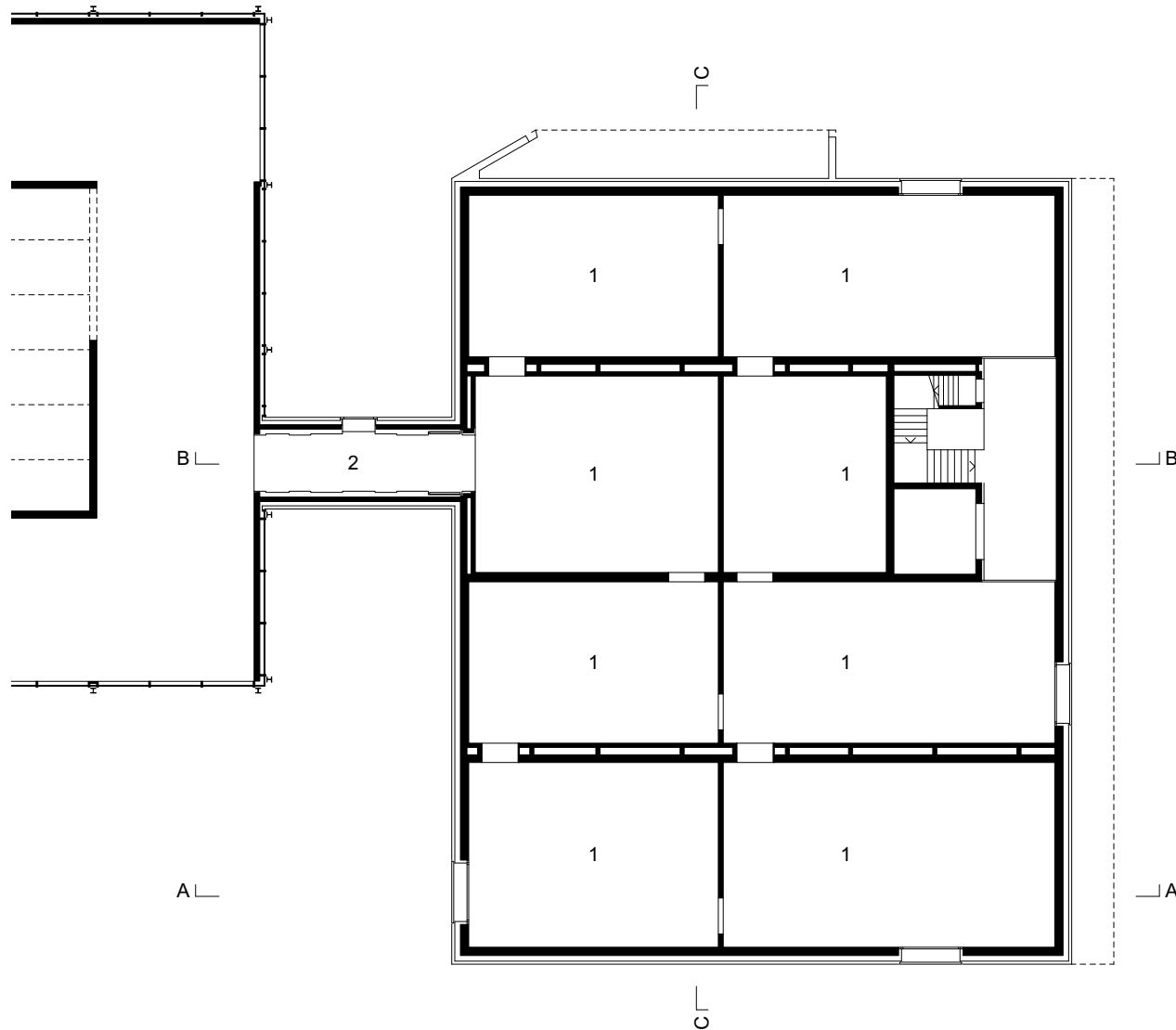
0341 Erweiterung Josef Albers Museum Quadrat, Bottrop, 2016 - 2022
0341 Extension Josef Albers Museum Quadrat, Bottrop, 2016 - 2022

ARGE Josef Albers Museum Quadrat GIGON/GUYER / pbr

Grundriss Dachgeschoss
Top floor



© GIGON / GUYER



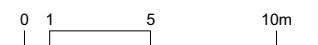
LEGENDE

- 1 Ausstellung
- 2 Verbindungsbrücke
- 3 Pädagogik
- 4 Lager Pädagogik

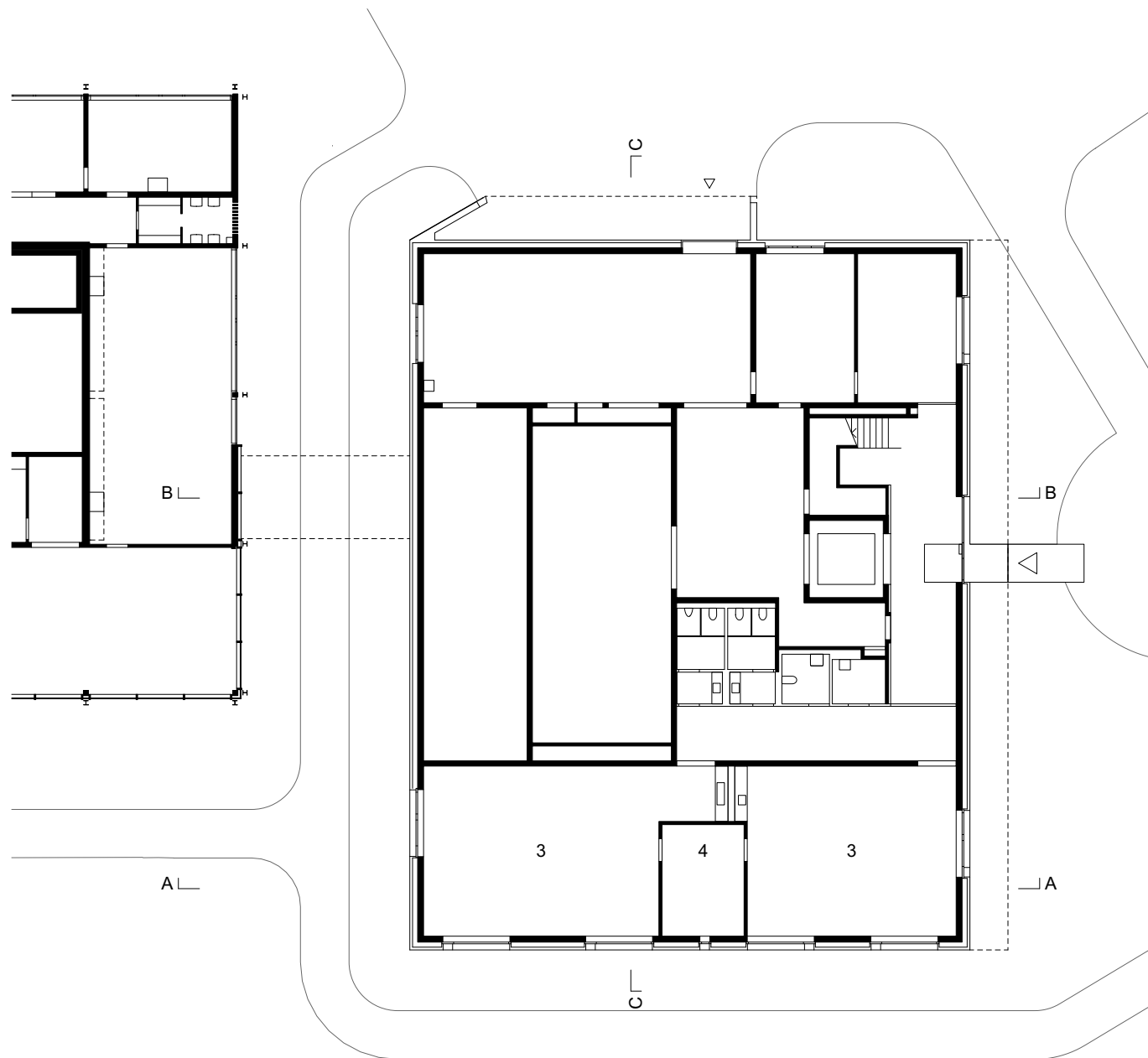
0341 Erweiterung Josef Albers Museum Quadrat, Bottrop, 2016 - 2022
 0341 Extension Josef Albers Museum Quadrat, Bottrop, 2016 - 2022

ARGE Josef Albers Museum Quadrat GIGON/GUYER / pbr

Ebene Ausstellung
 Exhibition level



© GIGON / GUYER



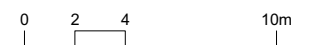
LEGENDE

- 1 Ausstellung
- 2 Verbindungsbrücke
- 3 Pädagogik
- 4 Lager Pädagogik

0341 Erweiterung Josef Albers Museum Quadrat, Bottrop, 2016 - 2022
 0341 Extension Josef Albers Museum Quadrat, Bottrop, 2016 - 2022

ARGE Josef Albers Museum Quadrat GIGON/GUYER / pbr

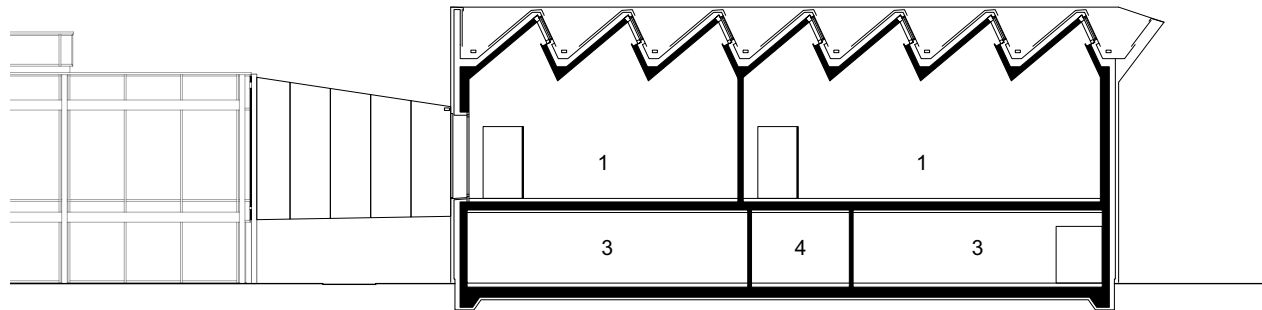
Ebene Stadtgarten
 Park level



© GIGON / GUYER

LEGENDE

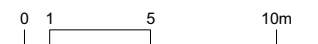
- 1 Ausstellung
- 2 Verbindungsbrücke
- 3 Pädagogik
- 4 Lager Pädagogik



0341 Erweiterung Josef Albers Museum Quadrat, Bottrop, 2016 - 2022
0341 Extension Josef Albers Museum Quadrat, Bottrop, 2016 - 2022

ARGE Josef Albers Museum Quadrat GIGON/GUYER / pbr

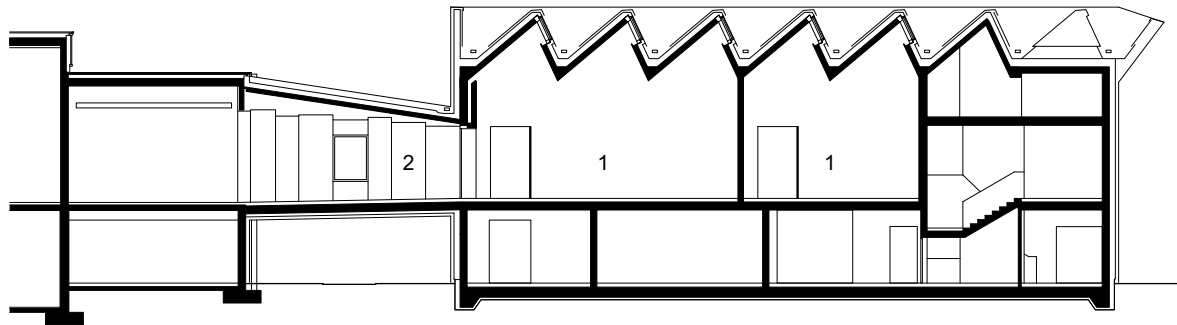
Schnitt A-A
Section A-A



© GIGON / GUYER

LEGENDE

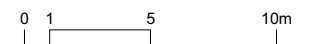
- 1 Ausstellung
- 2 Verbindungsbrücke
- 3 Pädagogik
- 4 Lager Pädagogik



0341 Erweiterung Josef Albers Museum Quadrat, Bottrop, 2016 - 2022
0341 Extension Josef Albers Museum Quadrat, Bottrop, 2016 - 2022

ARGE Josef Albers Museum Quadrat GIGON/GUYER / pbr

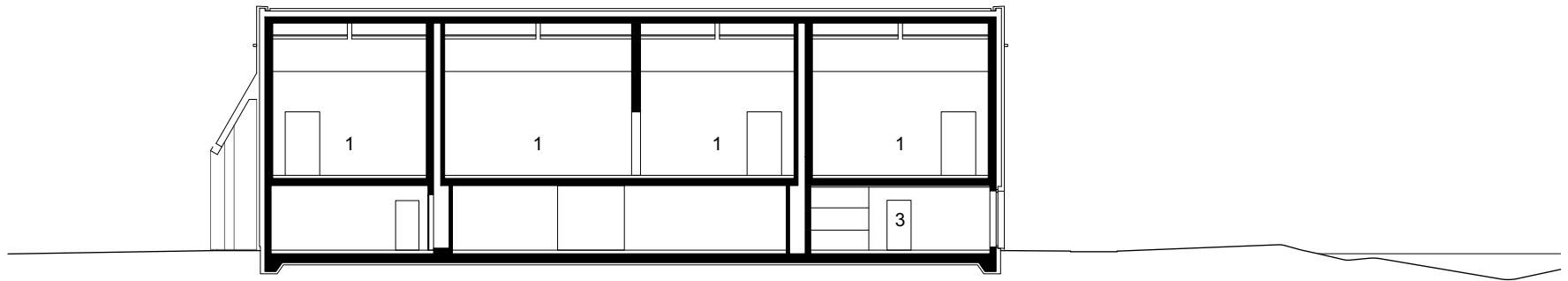
Schnitt B-B
Section B-B



© GIGON / GUYER

LEGENDE

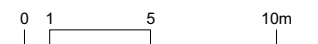
- 1 Ausstellung
- 2 Verbindungsbrücke
- 3 Pädagogik
- 4 Lager Pädagogik



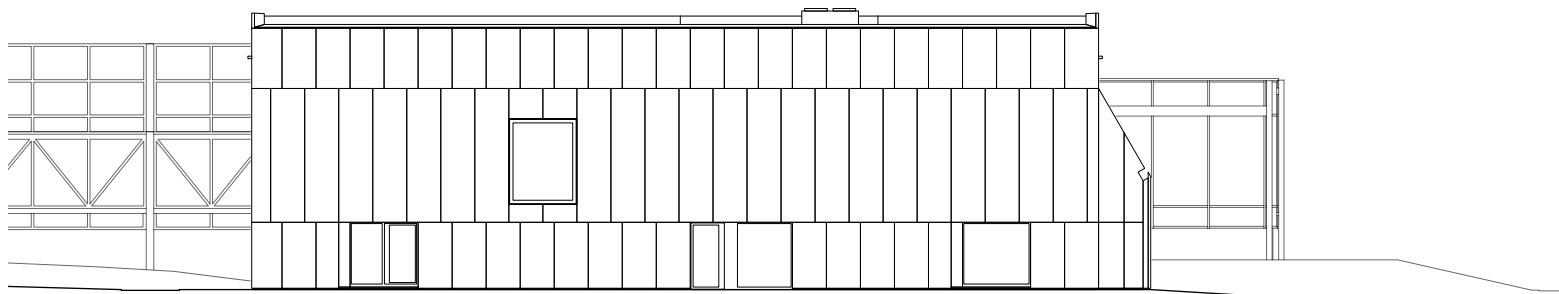
0341 Erweiterung Josef Albers Museum Quadrat, Bottrop, 2016 - 2022
0341 Extension Josef Albers Museum Quadrat, Bottrop, 2016 - 2022

Schnitt C-C
Section C-C

ARGE Josef Albers Museum Quadrat GIGON/GUYER / pbr



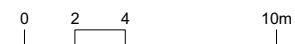
© GIGON / GUYER



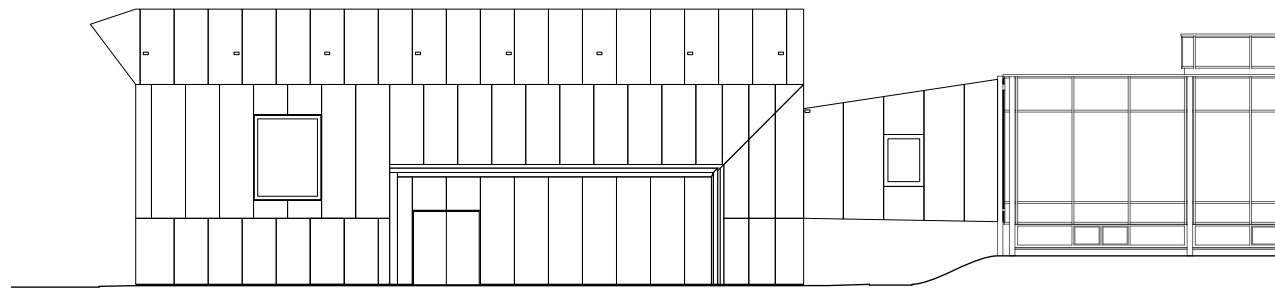
0341 Erweiterung Josef Albers Museum Quadrat, Bottrop, 2016 - 2022
0341 Extension Josef Albers Museum Quadrat, Bottrop, 2016 - 2022

ARGE Josef Albers Museum Quadrat GIGON/GUYER / pbr

Ansicht Nord-Ost
North-east elevation



© GIGON / GUYER



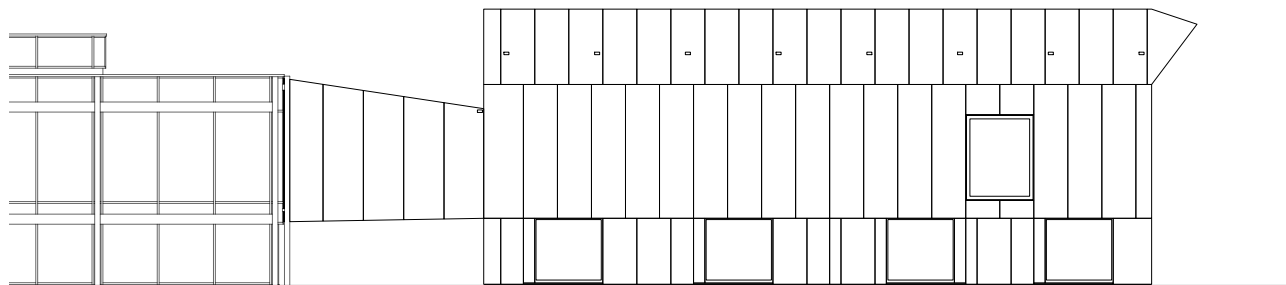
0341 Erweiterung Josef Albers Museum Quadrat, Bottrop, 2016 - 2022
0341 Extension Josef Albers Museum Quadrat, Bottrop, 2016 - 2022

ARGE Josef Albers Museum Quadrat GIGON/GUYER / pbr

Ansicht Nord-West
North-west elevation



© GIGON / GUYER



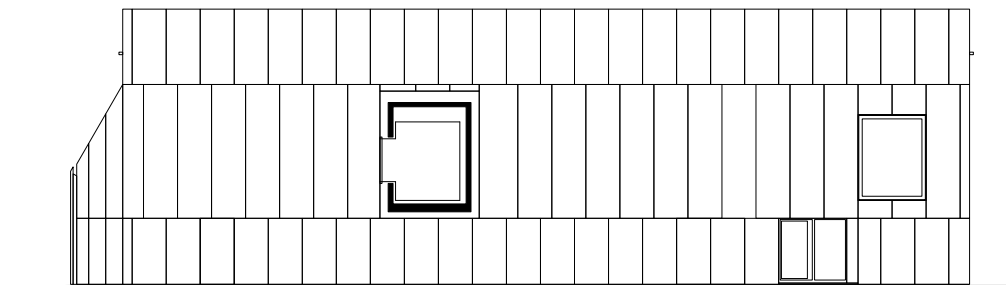
0341 Erweiterung Josef Albers Museum Quadrat, Bottrop, 2016 - 2022
0341 Extension Josef Albers Museum Quadrat, Bottrop, 2016 - 2022

ARGE Josef Albers Museum Quadrat GIGON/GUYER / pbr

Ansicht Süd-Ost
South-east elevation



© GIGON / GUYER



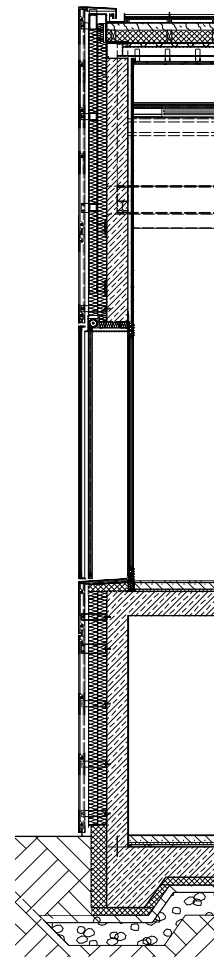
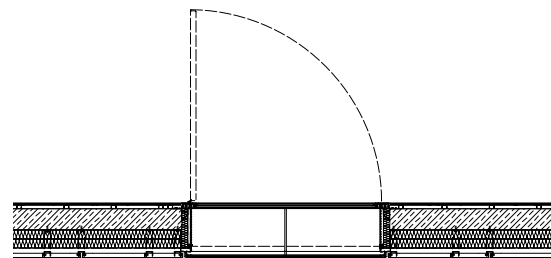
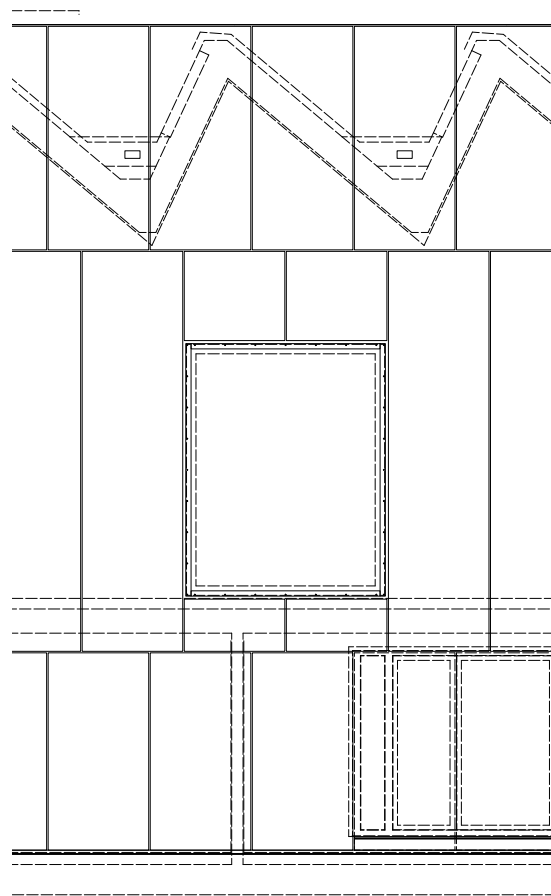
0341 Erweiterung Josef Albers Museum Quadrat, Bottrop, 2016 - 2022
0341 Extension Musée Josef Albers Museum Quadrat, Bottrop, 2016 - 2022

ARGE Josef Albers Museum Quadrat GIGON/GUYER / pbr

Ansicht Süd-West
Elévation sud-ouest



© GIGON / GUYER



Dach

- Dachverkleidung in Blech (Titanzink), 0,8 mm, mit Doppelstehfalz, auf Trägerplatte mit Abdichtung, 27mm
- Unterkonstruktion / Hinterlüftung, 60mm
- Untersichtfole, dauerhaft diffusionsdicht und wasserdicht
- Minerale Wärmeämmung, 200mm
- Abdichtung / Dampfsperre, 2,5mm, vollflächig aufgeklebt.
- Stahlblech, 2mm, auf Stahlkonstruktion aufgeschweisst, als Dampfsperre und zum Aufkleben / Aufschweiszen der Abdichtung
- Tragende Stahlstruktur
- Innere Deckenbekleidung mit Gipskartonplatten (2-fach), 25mm
- Spachtelung / Anstrich, 3mm

Oberlichter

- Pfosten-Riegel-Fassadensystem mit thermisch getrennte Metallprofile, pulverbeschichtet
- 3-fach-Isolierverglasung, mit Weissglas und zur Streuung des Tageslichtes einseitig geätztem Glas, Ätzung raumseitig, innerstes Glas VSG (Überkopfanforderungen)
- Innenliegende, textile Verdunkelungsstoren, von unten nach oben fahrend
- Innenliegende, textile Sonnenschutzstoren, von oben nach unten fahrend
- Indirektes Kunstlichtband mit LED, dimmbar

Fassadenaufbau (Ausstellungsräume)

- Hinterlüftetes, vorgehängtes Kalffassadensystem mit verdeckter Bolzeneinhängung, bestehend aus grossformatigen Blechen und Unterkonstruktion
- Aluminium, 4mm, pulverbeschichtet, IGP-Farbe, hochwetterfest, Farbe in Abstimmung mit dem bestehenden Museum
- Hinterlüftung / Unterkonstruktion 70mm
- Aussendämmung 240mm, mineralisch, kaschiert
- Tragende Aussenwand in Beton 280mm
- Vorsatzschale mit Justierschwingeblech 70mm
- Weissputz, streiflichttauglich, 5mm
- Anstrich

Fenster EG

- Inneres Fenster: Thermisch getrennte Metallprofile, pulverbeschichtet, Farbe IGP gemäss Fassadenblech nur für Reinigungs- und Wartungszwecke offenbar.
- 3-fach Isolierverglasung (Weissglas)
- Ausenliegender, textiler, transluzenter Sonnenschutz im Zwischenraum
- Äusseres Fenster: Festverglasung, VSG, hinterlüftet

Fassadenaufbau (Pädagogik)

- Hinterlüftetes, vorgehängtes Kalffassadensystem mit verdeckter Bolzeneinhängung, bestehend aus grossformatigen Blechen und Unterkonstruktion
- Aluminium, 4mm, pulverbeschichtet, IGP-Farbe, hochwetterfest, Farbe in Abstimmung mit dem bestehenden Museum
- Hinterlüftung / Unterkonstruktion 70mm
- Aussendämmung 240mm, mineralisch
- Tragende Aussenwand in Beton 280mm
- Glasfaservlies / Weissputz, 10mm
- Anstrich

Fenster UG

- Thermisch getrennte Stahlprofile, pulverbeschichtet, Farbe IGP gemäss Fassadenblech
- 3-fach Isolierverglasung
- Schmalere Lüftungsfügel hinter perforiertes Stahlblech Quadratrochung versetzt Qv 4-10, Freie Lochung 51.02%
- Ausenliegender, textiler, transluzenter Sonnenschutz

Deckenaufbau EG (Ausstellungsräume)

- Parkett (Holzdielen), Eiche, 22mm
- vollflächige Verklebung, 1mm
- Grundierung, 1mm
- Zementestrich, bewehrt, mit Bodenheizung, 86mm
- PE-Folie, zweilagig
- Trittschalldämmung, 30mm
- Betondecke, 320mm
- abgehängte Gipskartondecke, 100mm, akustisch wirksam, Perforation 6/18, fugenlos, gespachtelt
- Anstrich

Bodenaufbau UG (Pädagogik)

- Stäbchenparkett, Eiche geräuchert, geölt, 10mm
- Vollflächige Verklebung, 1mm
- Grundierung, 1mm
- Zementestrich, bewehrt, mit Bodenheizung, 87mm
- PE-Folie, zweilagig
- Trittschalldämmung, 30mm
- Minerale Ausgleichschüttung, 30mm
- Bodenplatte in Stahlbeton, 400mm
- Frischbetonverbundfolie
- Druckfeste Wärmedämmung XPS, 100mm
- Magerbeton
- Schottererschicht

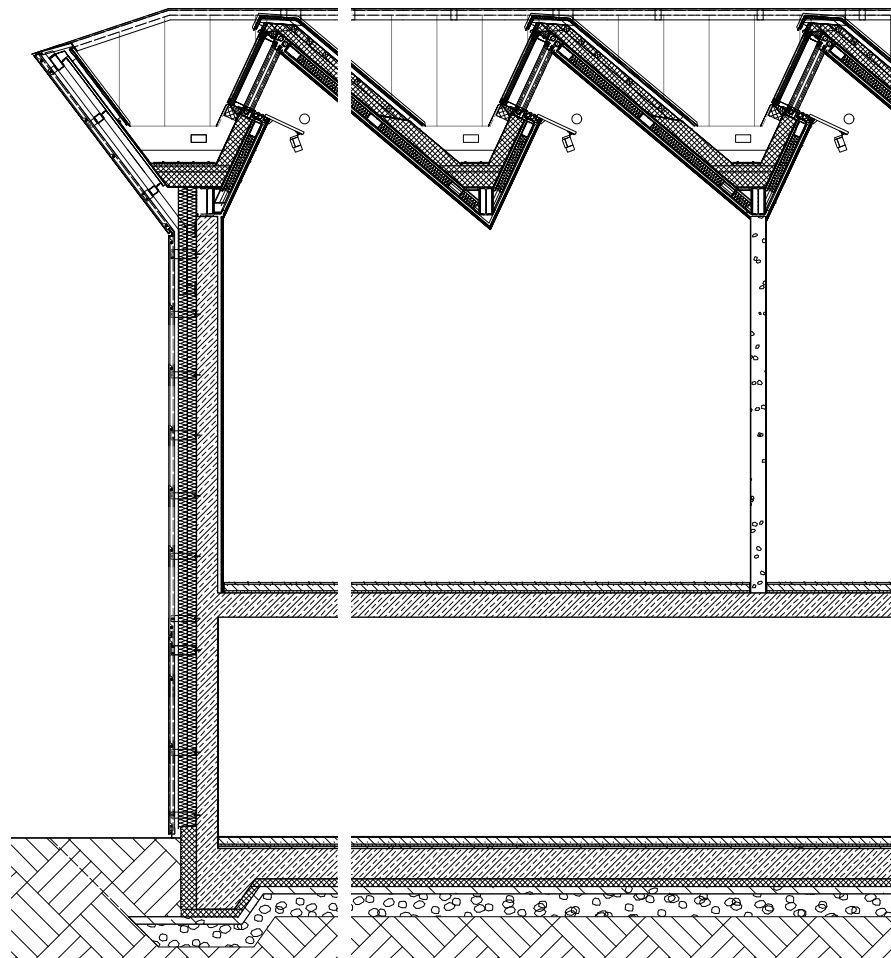
0341 Erweiterung Josef Albers Museum Quadrat, Bottrop, 2016 - 2022
 0341 Extension Josef Albers Museum Quadrat, Bottrop, 2016 - 2022

ARGE Josef Albers Museum Quadrat GIGON/GUYER / pbr

Konstruktion Fassaden / Dach
 Façade Construction / Roof



© GIGON / GUYER



Dach

- Dachverkleidung in Blech (Titanzink), 0,8 mm, mit Doppelstehfalz, auf Trägerplatte mit Abdichtung, 27mm
- Unterkonstruktion / Hinterlüftung, 60mm
- Untersachfole, dauerhaft diffusionsdicht und wasserdicht
- Mineralische Wärmedämmung, 200mm
- Abdichtung / Dampfsperre, 2,5mm, vollflächig aufgeklebt,
- Stahlblech, 2mm, auf Stahlkonstruktion aufgeschweisst, als Dampfsperre und zum Aufkleben / Aufschweiszen der Abdichtung
- Tragende Stahlstruktur
- Innere Deckenbekleidung mit Gipskartonplatten (2-fach), 25mm
- Spachtelung / Anstrich, 3mm

Oberlichter

- Pfosten-Riegel-Fassadensystem mit thermisch getrennte Metallprofile, pulverbeschichtet
- 3-fach-isolierverglasung, mit Weissglas und zur Streuung des Tageslichtes einseitig geätztem Glas, Ätzung raumseitig, innerstes Glas VSG (Überkopfanforderungen)
- Innenliegende, textile Verdunkelungsstoren, von unten nach oben fahrend
- Innenliegende, textile Sonnenschutzstoren, von oben nach unten fahrend
- Indirektes Kunstlichtband mit LED, dimmbar

Fassadenaufbau (Ausstellungsräume)

- Hinterlüftetes, vorgehängtes Kaltfassadensystem mit verdeckter Bolzeneinhängung, bestehend aus grossformatigen Blechen und Unterkonstruktion
- Aluminium, 4mm, pulverbeschichtet, IGP-Farbe, hochwetterfest, Farbe in Abstimmung mit dem bestehenden Museum
- Hinterlüftung / Unterkonstruktion 70mm
- Aussendämmung 240mm, mineralisch, kaschiert
- Tragende Aussenwand in Beton 280mm
- Vorsatzschale mit Justierschwingbügel 70mm
- Weissputz, streiflichttauglich, 5mm
- Anstrich

Fenster EG

- Inneres Fenster: Thermisch getrennte Metallprofile, pulverbeschichtet, Farbe IGP gemäss Fassadenblech
- nur für Reinigungs- und Wartungszwecke offenbar,
- 3-fach Isolierverglasung (Weissglas)
- Aussenliegender, textiler, transluzenter Sonnenschutz im Zwischenraum
- Äusseres Fenster: Festverglasung, VSG, hinterlüftet

Fassadenaufbau (Pädagogik)

- Hinterlüftetes, vorgehängtes Kaltfassadensystem mit verdeckter Bolzeneinhängung, bestehend aus grossformatigen Blechen und Unterkonstruktion
- Aluminium, 4mm, pulverbeschichtet, IGP-Farbe, hochwetterfest, Farbe in Abstimmung mit dem bestehenden Museum
- Hinterlüftung / Unterkonstruktion 70mm
- Aussendämmung 240mm, mineralisch
- Tragende Aussenwand in Beton 280mm
- Glasfaservlies / Weissputz, 10mm
- Anstrich

Fenster UG

- Thermisch getrennte Stahlprofile, pulverbeschichtet, Farbe IGP gemäss Fassadenblech
- 3-fach Isolierverglasung
- Schmäler Lüftungsfügel hinter perforiertes Stahlblech Quadratrochung versetzt Qv 4-10, Freie Lochung 51,02%
- Aussenliegender, textiler, transluzenter Sonnenschutz

Deckenaufbau EG (Ausstellungsräume)

- Parkett (Holzdielen), Eiche, 22mm
- vollflächige Verklebung, 1mm
- Grundierung, 1mm
- Zementestrich, bewehrt, mit Bodenheizung, 86mm
- PE-Folie, zweilagig
- Trittschalldämmung, 30mm
- Betondecke, 320mm
- abgehängte Gipskartondecke, 100mm, akustisch wirksam, Perforation 6/18, fugenlos, gespachtelt
- Anstrich

Bodenaufbau UG (Pädagogik)

- Stäbchenparkett, Eiche geräuchert, geölt, 10mm
- Vollflächige Verklebung, 1mm
- Grundierung, 1mm
- Zementestrich, bewehrt, mit Bodenheizung, 87mm
- PE-Folie, zweilagig
- Trittschalldämmung, 30mm
- Mineralische Ausgleichschüttung, 30mm
- Bodenplatte in Stahlbeton, 400mm
- Frischbetonverbundfolie
- Druckfeste Wärmedämmung XPS, 100mm
- Magenbeton
- Schottererschicht

0341 Erweiterung Josef Albers Museum Quadrat, Bottrop, 2016 - 2022
0341 Extension Josef Albers Museum Quadrat, Bottrop, 2016 - 2022

ARGE Josef Albers Museum Quadrat GIGON/GUYER / pbr

Konstruktion Fassaden / Dach
Façade Construction / Roof



© GIGON / GUYER

Erweiterung Josef Albers Museum Quadrat «Josef-Albers-Galerie» Bottrop

Extension Josef Albers Museum Quadrat «Josef-Albers-Galerie» Bottrop

ARGE Josef Albers Museum Quadrat Gigon/Guyer / pbr
Pressebilder für die Berichterstattung im Rahmen
der Eröffnung der Museumserweiterung und Ausstellungseröffnung
© **Stefan Müller, Berlin** (Nutzungsrechte Gigon/Guyer)



EJAM_Erweiterung_StefanMueller_A_01.jpg



EJAM_Erweiterung_StefanMueller_A_02.jpg

**Erweiterung Josef Albers Museum Quadrat, Bottrop
«Josef-Albers-Galerie»**

© Stefan Müller, Berlin

**Erweiterung Josef Albers Museum Quadrat, Bottrop
«Josef-Albers-Galerie»**

© Stefan Müller, Berlin



EJAM_Erweiterung_StefanMueller_A_03.jpg



EJAM_Erweiterung_StefanMueller_A_04.jpg

**Erweiterung Josef Albers Museum Quadrat, Bottrop
«Josef-Albers-Galerie»**

© Stefan Müller, Berlin

**Erweiterung Josef Albers Museum Quadrat, Bottrop
«Josef-Albers-Galerie»**

© Stefan Müller, Berlin

Erweiterung Josef Albers Museum Quadrat «Josef-Albers-Galerie» Bottrop

Extension Josef Albers Museum Quadrat «Josef-Albers-Galerie» Bottrop

ARGE Josef Albers Museum Quadrat Gigon/Guyer / pbr
Pressebilder für die Berichterstattung im Rahmen
der Eröffnung der Museumserweiterung und Ausstellungseröffnung
© **Stefan Müller, Berlin** (Nutzungsrechte Gigon/Guyer)



EJAM_Erweiterung_StefanMueller_I_01.jpg

**Erweiterung Josef Albers Museum Quadrat, Bottrop
«Josef-Albers-Galerie»**

© Stefan Müller, Berlin



EJAM_Erweiterung_StefanMueller_I_02.jpg

**Erweiterung Josef Albers Museum Quadrat, Bottrop
«Josef-Albers-Galerie»**

© Stefan Müller, Berlin



EJAM_Erweiterung_StefanMueller_I_03.jpg

**Erweiterung Josef Albers Museum Quadrat, Bottrop
«Josef-Albers-Galerie»**

© Stefan Müller, Berlin



EJAM_Erweiterung_StefanMueller_I_04.jpg

**Erweiterung Josef Albers Museum Quadrat, Bottrop
«Josef-Albers-Galerie»**

© Stefan Müller, Berlin

Download press information and photos:

<https://quadrat.bottrop.de/sonstiges/presse.php>

Press contact

commissioned by the Josef Albers Museum Quadrat Bottrop

Hendrik von Boxberg

+49 177 7379207

presse@von-boxberg.de

Franziska Schönberner

+49 175 1635251

post@franziska-schoenberner.de

For questions regarding architecture:

Gigon/Guyer Architekten

Carmenstrasse 28

CH-8044 Zürich

+41 44 2571141

k.mencke@gigon-guyer.ch

Josef Albers Museum Quadrat Bottrop

Anni-Albers-Platz 1

46236 Bottrop

Tel.: 02041/372030

Fax: 02041/3720344

E-Mail: quadrat@bottrop.de

<https://quadrat.bottrop.de/>